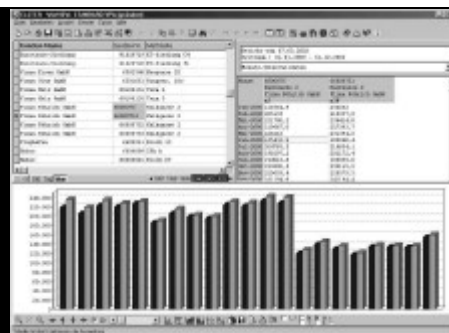


WinVIEW

Data Management Software

WinTASK

Program Control Software



Applications - WinVIEW

The **WinVIEW** program is designed to archive, evaluate and analyse data from devices in ELSTER's LIS-100, LIS-200 and EuroTRACE product lines as well as data from the registration functions in devices with a DSfG interface.

The program processes meter readings, consumption data, analogue metering data and messages concerning specific events and stores this data for further evaluation. For these purposes, WinVIEW provides the user with a variety of different display and printout possibilities as well as a high degree of flexibility when it comes to exporting the data. The structure of the program is based on the MS-Office Standard, which makes it easy to get used to the operating functions available.

Brief Information - WinVIEW

Archiving

When transferring and processing data from end devices it is possible to archive the consumption data, metering data and meter readings from the data loggers. Any available data records (WinLIS) are directly adopted for use.

Visualisation

With the help of a number of freely-configurable screen masks it is possible to display the consumption and metering data as well as the meter readings from individual and/or groups of metering points both in tabular and graphical form.

The parameters for evaluation processes can be set once and called up time and time again.

The time period to be displayed, the format, the colours and scales on the charts can all be set as required.

In addition, the current display can be printed out at any time or, if necessary, can be used directly in Microsoft applications such as WORD or EXCEL. A report generator can be used to prepare a PDF file.

Data Administration

WinVIEW can process files of data on customers and devices. Individual information such as the labelling of metering points can be added or amended. For this purpose, useful functions including Search and Replace are available. All metering points can thus be labelled in accordance with official requirements laid down by the various energy associations.

Printing Out and Exporting Data

A number of pre-defined formats allow the user to print out the data or to export it into another file. On top of this, the user can develop their own individual formats or adapt the existing ones as required. In so doing, it is possible to export the data into a number of different spreadsheet programs (EXCEL), billing and administration programs (SAP) or to display it directly on the Internet in an HTML file.

Additional Functions

A data check function enables the user to monitor the data records in order to check for missing data or to verify that limits have not been exceeded, for example.

Additional functions such as summarising the data from a number of metering points into one 'mathematical device' or converting the data into different physical dimensions round off the comprehensive range of functions available with the WinVIEW evaluation software and ensure that data can be processed in an easy and practical manner.

Main Features - WinVIEW

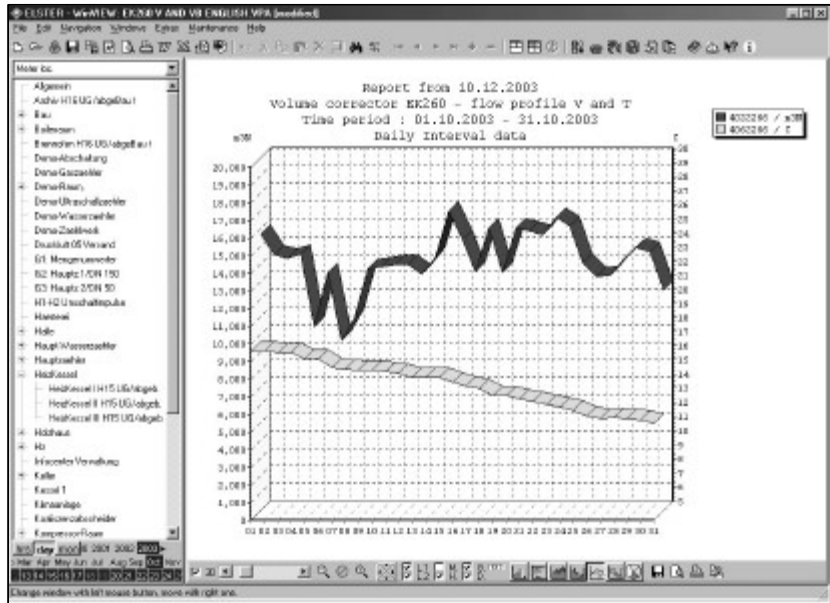
- Archiving data
- Freely-configurable user interface
- Visualisation in tabular and graphical form
- Administration and maintenance of customer and meter data
- Labelling of metering points in accordance with official requirements
- Direct data export to Microsoft applications and follow-up systems
- User-defined formats for the flexible export of data to other programs
- Preparation of device groups for automatic data provision
- Preparation of 'mathematical devices' to add together a series of volumes or for other calculation purposes
- Additional functions:
 - Meter switching
 - Device switching
 - Data check
 - Database monitoring
- Integrated, comprehensive operating instructions in the form of a help file
- Optional: User administration function in order to use WinVIEW in a Client/Server version within a network

Examples of WinVIEW applications

Display of consumption values (standard volume) in relation to the gas temperature.

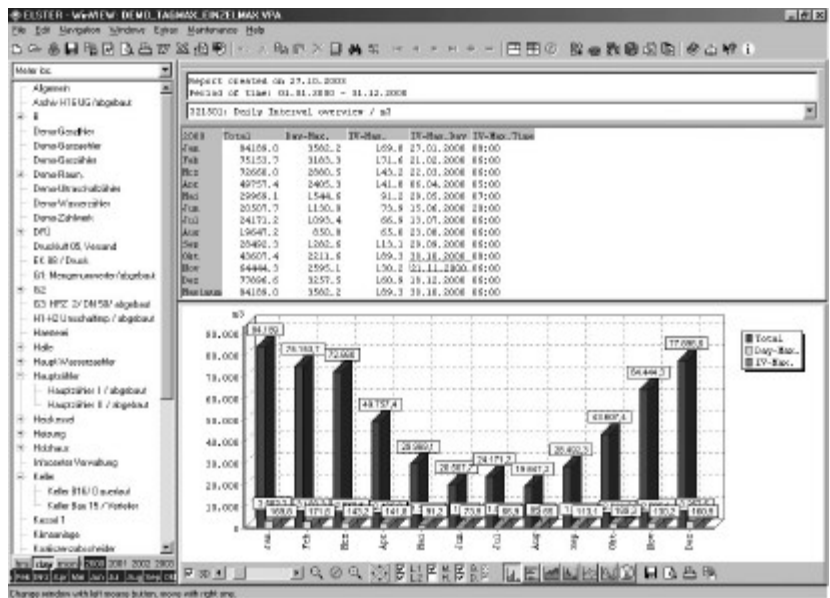
The scales on the axes are set independently of each other.

The selection of the device channels (metering points) is made on the left via a Windows Explorer-type tree structure.



Simple selection of a metering point or device channel with the help of a tree structure similar to that of Windows Explorer. The overview of the metering points remains in view.

Evaluation tables for a variety of applications can be called up. This diagram shows an annual overview including monthly values together with the corresponding maximum values referring to the day or the preset recording interval.

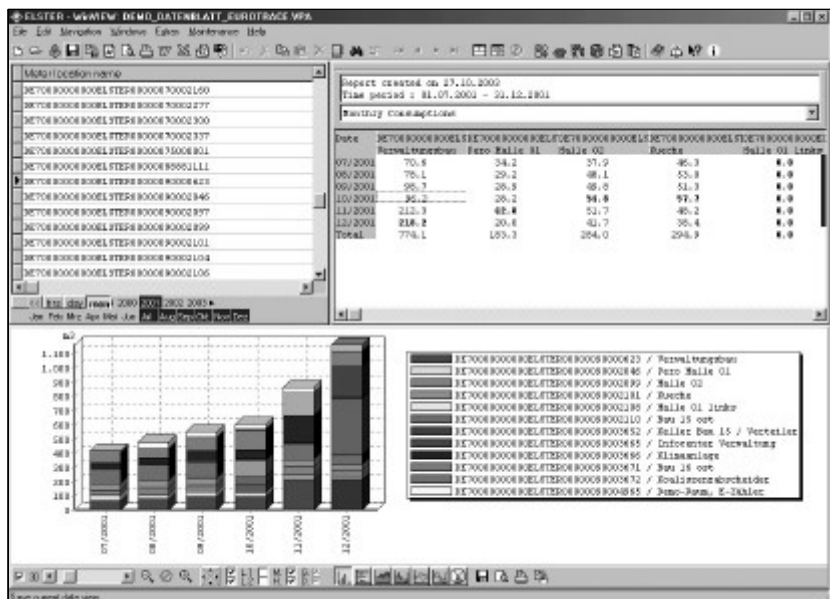


Labelling the metering points in accordance with official requirements lay down by the various energy associations.

Shown here is the sum of monthly values taken from several metering points in a project using the EuroTRACE system.

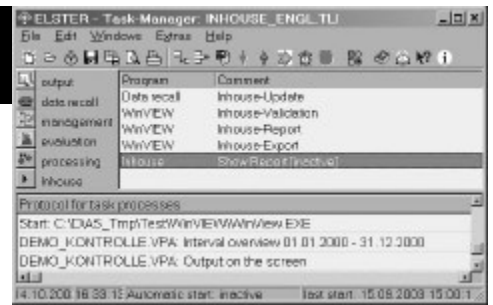
Any necessary standard data can be called up to be used in the evaluation of the data. This makes it possible to put together data according to metering point, customer, premises etc. without a great deal of effort.

All of the data can be directly exported into other applications.



WinTASK

Program Control Software



Applications - WinTASK

The **WinTASK** program controls several other programs automatically within a definable time frame. The ELSTER programs WinCOMS and WinVIEW as well as other programs (e.g. EXCEL) can be started one after another with the help of pre-defined parameters in order to make certain individual, frequently recurring processes completely automatic.

Brief Information - WinTASK

With the help of WinTASK several programs can be called up one after another either directly or on a time-controlled basis. To do this, the programs to be executed are entered in a list as a number of 'tasks'.

In the case of the ELSTER programs WinCOMS and WinVIEW, the tasks to be carried out by these programs are set with the help of certain parameter data. This enables, for example, the automatic update and monitoring of the data records, the transfer or print-out of the new data of a previously composed group of devices for control, information or transfer purposes.

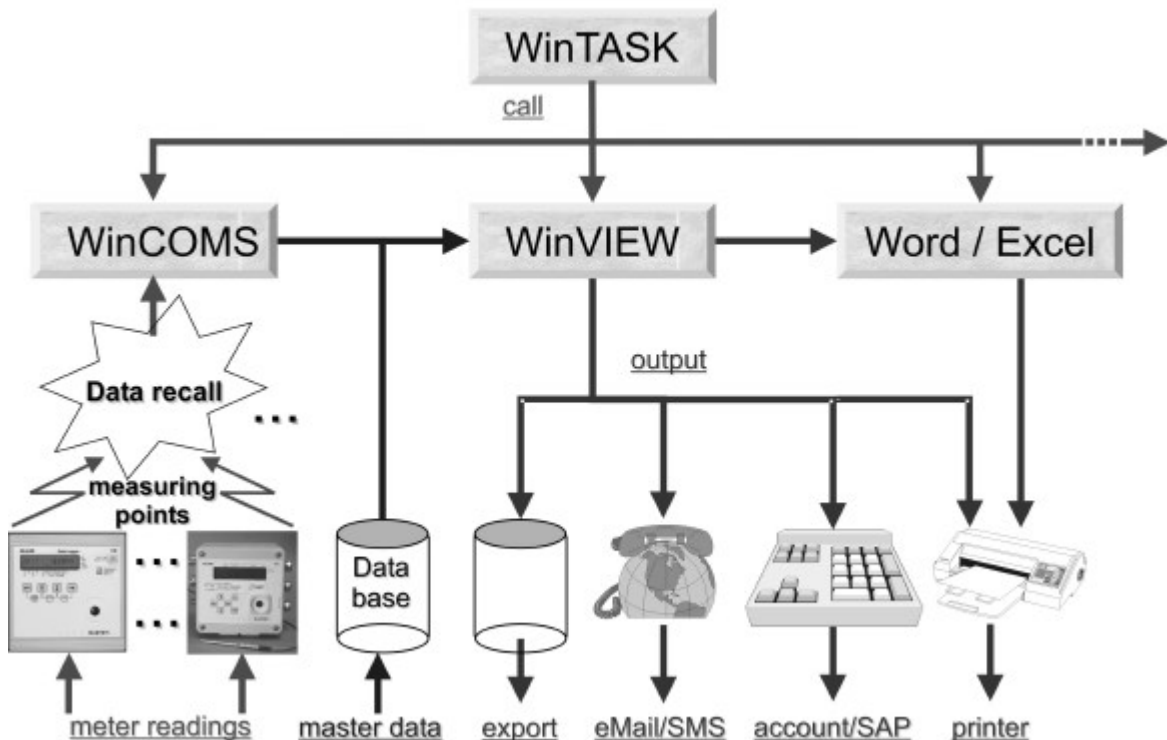
If other programs such as EXCEL or WORD are to be incorporated as a task in WinTASK, then the file that is to be opened can also be entered in the task list.

WinTASK is, therefore, a tool, which helps to fully automate frequently recurring processes such as the call-up of data or the processing and export of energy data.

Main Features - WinTASK

- Interactive and automatic running of the program
- Integration of ELSTER programs WinVIEW and WinCOMS possible
- Integration of Microsoft programs with definition of file to be opened
- Program can be run in the background
- Reports on action taken and results of tasks undertaken

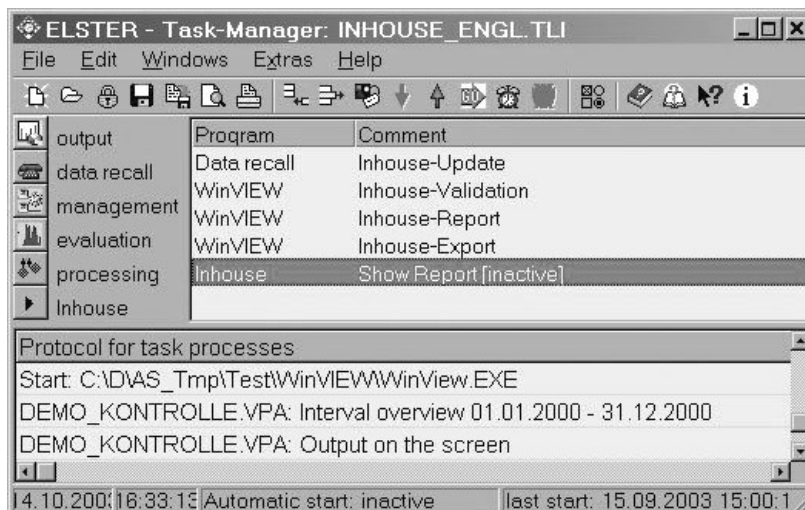
The controlling of data flow with WinTASK



Examples of WinTASK applications

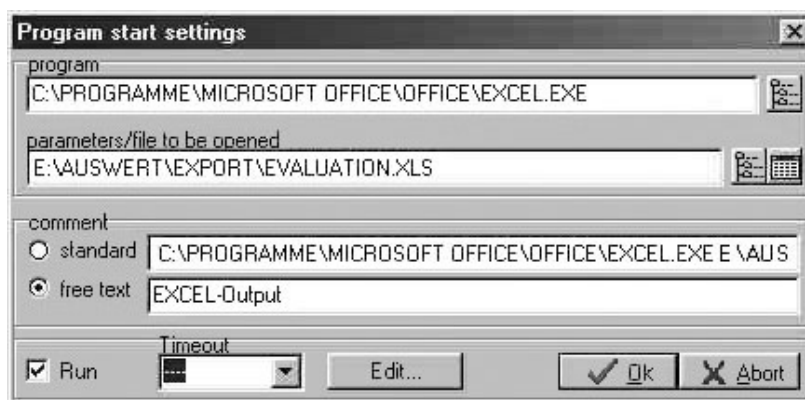
This diagram shows the main screen of WinTASK.

In the Task list there is a list of the programs, which are to be automatically, activated one after another. In the lower part of the screen you will find a protocol of the tasks the programs have carried out. All of the important functions in the program such as the manual start-up or the time-controlled automatic sequence in the program list can be selected directly at the click of a button.



Using the settings for the general 'program starter' it is possible to incorporate any required program in the task list and set the file, which is to be opened.

This means that export files created in WinVIEW can be directly opened up in Microsoft EXCEL and, if necessary, can be further processed with the help of a macro.

**System requirements / Seminars**

- Pentium I 90 Mhz, 64MB RAM
- 50MB free hard disk space
- Windows 95/98/ME or Windows NT/2000/XP
- One free serial interface for AS-200 read out
- Printer

Order information

Software *	Order number
WinVIEW	83480640
WinTASK	83480650

* Download of all programs listed here at <http://www.elster.com>

Further software packages and devices in the LIS-System

- WinPADS
- WinCOMS

Your contacts**Europe, Africa, Near & Middle East**

ELSTER Handel GmbH
Steinern Straße 19-21
55252 Mainz-Kastel, Germany
Tel. +49 6134 605-0
Fax +49 6134 605-223

North & Latin America

American Meter Company
300 Welsh Road, Building ONE
Horsham, PA 19044-2234, USA
Phone +1215 830 1899
Fax +1215 830 1892

Asia Pacific

ELSTER AG
Singapore Representative Office
80 Marine Parade Road
#09-04 Parkway Parade
Phone +65 2477728
Fax+65 2477729
www.elster-amco.com

WinVIEW EN01

A20031211