

RVG Rotary Meters

with double direction index S1D



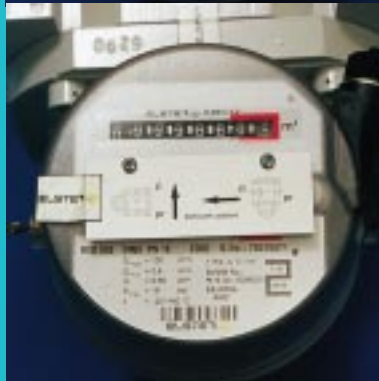
In the last profiles we informed you about the new double direction index S1D and its advantages, especially the flexibility of one device for every flow direction: left to right, right to left, top to bottom and bottom to top. Now it is not only available (Fig. 1) but a number of our customers' are actually using them. In this picture you see the IN-S11 sealed with seal wire and a user's lead seal. In special cases this may be called for, standard is an adhesive user seal which meets the requirements of almost every authority.

Fig. 1: RVG G65 with S1D

Fig. 2: Upper index hidden. Flow directions shown on the cover plate.



Fig. 3: Lower index hidden. Flow directions shown on the cover plate.



Figures 2 and 3 show the mechanical double direction index for opposite flow directions in the same installation position. The index which counts forward is always open, the complementary index is hidden by the cover plate. The allowed flow directions in each case are shown on the cover plate.

Compared to RVG with index S1 in opposite flow direction applications (Fig. 4) the double direction index S1D always allows installations with a minimum distance M to walls. This means in every case that the benefit of the compact size is seen to the full.

In addition to the flexibility in flow direction there is a second advantageous use of the index S1D: In vertical installations it is most comfortable to read the index S1D. Fig. 5 demonstrates the case of a compact unit RVG G65 and EK-88/K in a vertical pipe.

Fig. 4: Data and drawing for RVG with S1 standard index

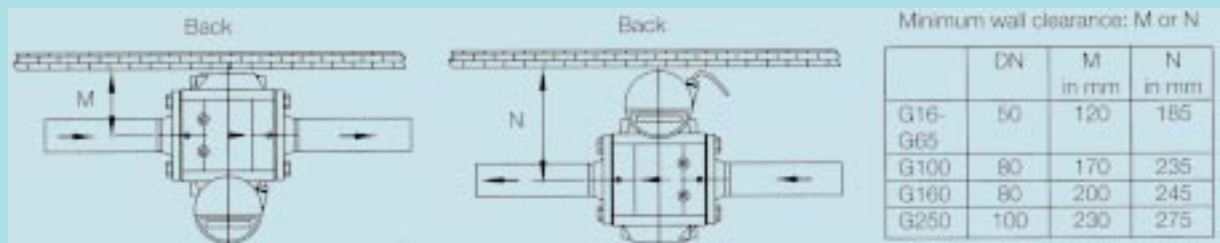


Fig. 5: Vertical installation of RVG with S1D index and EK-88/K volume corrector



DR. HARALD DORNAUF, ELSTER GERMANY