

NEW: DL220 – BATTERY-OPERATED DATA LOGGER WITH INTEGRATED GSM MODEM

*Completely autonomous*



Remote data transfer from data loggers and volume correctors located in gas stations belonging to special-contract customers has become a relatively routine process. Using the successful DL240 data logger, all common types of transmission media can be used to transfer the data, provided that there is an external power supply available for the devices. Even if there isn't, it might still be possible to connect the devices to a remote transfer system with the help of solar technology. This helps to solve the power problem, but it involves high capital expenditure and the danger of vandalism.

With the new DL220 data logger, it is now possible to read out meter readings and consumption data via a remote data transfer system even if there is no external power supply. This is because the data logger has an integrated GSM modem with its own antenna. The data logger and the GSM are powered by separate batteries, which guarantees that the functions of the data logger (counting, archiving) are available at all times, whether the modem is in operation or not.

With a clever call-up strategy, it is possible to reduce the energy consumption of the modem to an absolute minimum thus enabling the battery to be used for at least one entire calibration period. To do this, the modem is only activated within a pre-defined time span, e.g. once a week or month for half an hour. This time period is sufficient to read out the data and still provides enough leeway to repeat the call-up if, for example, the network is overloaded and the connection is cut. The data call-up software WinCOMS supports this call-up strategy and ensures that the



data logger is only read out within this particular time span. At the end of this period, the modem switches itself off again.

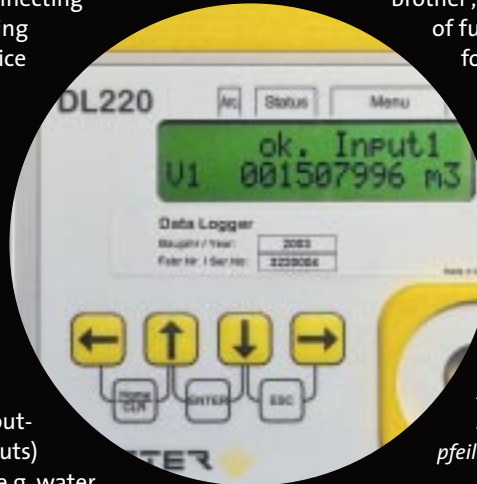
A further advantage of the DL220 is the simple installation, which only involves connecting the pulse cable between the metering device and the data logger. The device can be started up without the need for any special tools since the reception strength of the mobile network is displayed directly on the DL220.

The DL220 has two intrinsically-safe inputs and covers practically every field of application. Pulsers from gas meters and volume correctors installed in hazardous areas can be used just as easily as pulse outputs (reed switches, transistor outputs) from meters used for other media, e.g. water. In addition, there is also the possibility to use the transistor outputs to transmit consumption data

in pulse form or to provide status and alarm signals for further processes.

It goes without saying that the now well-known and useful features included in the DL220's 'big brother', the DL240, also belong to the range of functions in the DL220. These include, for example, SMS messages announcing when load capacities have been exceeded or, in general, a high level of flexibility when it comes to adapting to customer requirements.

If there are any requirements for which you have not yet found a solution, why not get in touch with us? We look forward to finding a solution for you.



**RÜDIGER PFEIL, ELSTER GERMANY**

[pfeil@elster.com](mailto:pfeil@elster.com)