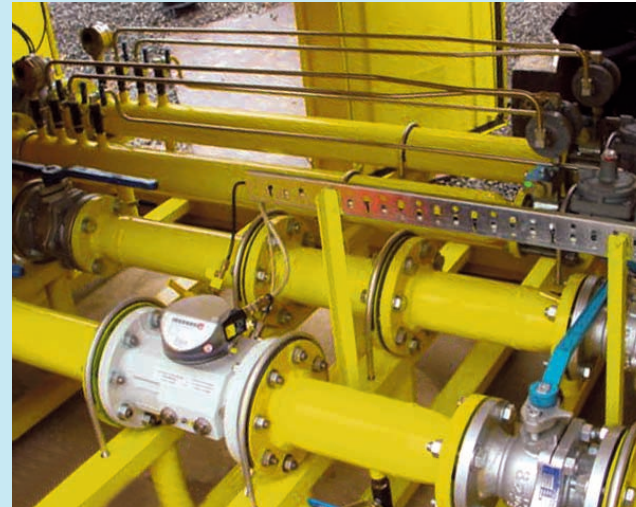


FIRST METERING AND REGULATING STATION DELIVERED IN SINGAPORE

Stable outlet pressure

With the close collaboration of IGA Netherlands and ELSTER AG Singapore Office, we delivered the first Metering & Pressure Regulating Station (MPRS) to Singapore Power Gas in June 2004. This station regulates the inlet pressure of 2.5 barg to a stable outlet pressure of 0.28 barg to the Singapore SONY factory with an expected maximum capacity of 1,500 scmh.

This marks an important milestone for SONY Display Device as switching gas supply from LPG to Natural Gas increases plant efficiency without compromising environment protection. The Manufacturing Director of SONY Display Device officially opened the gas supply inlet valve to signify continuous and stable gas supply for a brighter future.



Interior of metering and regulating station

It is one of the several successful cases of transferring part of the work scope to the Singapore office in supplying such stations. The station design and engineering, station manufacturing supervision and quality control were carried out by our Singapore office and the key components, which include RSH Gas Filters, TRZ G400 Turbine Meters, EK230 EVC, Axial Flow Valves and HPR-15 Relief Valves, were supplied by IGA Netherlands. One month after the commissioning of the station, the happy customer, Singapore Power Gas showed us the pressure recording chart recording the station outlet pressure – a perfect round circle that shows extreme stable outlet pressure.

And now, we are preparing two more MPRS of flow capacity 4800 scmh and 3800 scmh due to be delivered in November 2004.



Mr. A. Matsueda, Manufacturing Director of SONY Display Device, opened the gas supply valve at the ceremony

K.C. TAN, ELSTER-AMCO SINGAPORE

kctan@elster-amco.com.sg