

EK260: NEW SOFTWARE VERSION SIMPLIFIES OPERATION

We think less is more

In order to meet the multitude of requirements concerning compact electronic volume correctors, it is necessary to be able to configure the devices in a flexible manner. It must be possible to read and change all of the numerous values and parameters as easily as possible and with the minimum of effort. On a day-to-day basis, however, it is not actually necessary to use all of the functions or display all of the data, it is sufficient to get the most essential data. Therefore, we have updated the software for the EK260 volume corrector and made it considerably more user-friendly.



When the meters in a station are monitored, the user reads the data from the EK260 and records the current readings for actual and standard volumes, the current gas pressure and temperature, the peak-load register and the status register – no more, no less! These checks should be as simple and quick as possible for the service personnel to carry out without the need for an instruction manual.

At the same time, there is also the need to display, and possibly change, at a later time some data and parameters which are not necessary for the current fiscal measurement. This is, for example, the case when a GSM modem is retro-fitted onto an already installed EK260 for the purpose of remote data transfer. If a laptop with the WinPADS parameter software is not available, then with the help of the new EK260 software it is possible to enter all of the relevant settings directly into the device itself (version 2.40).

When monitoring the data in the course of a routine trip around a station, it is possible to reduce the extent of the display on the device to one column with 12 values (USER menu). All of the values in this column can be displayed one after another by using the arrow keys (see picture). The content of the reduced display in the USER menu can still be defined by the WinPADS software.

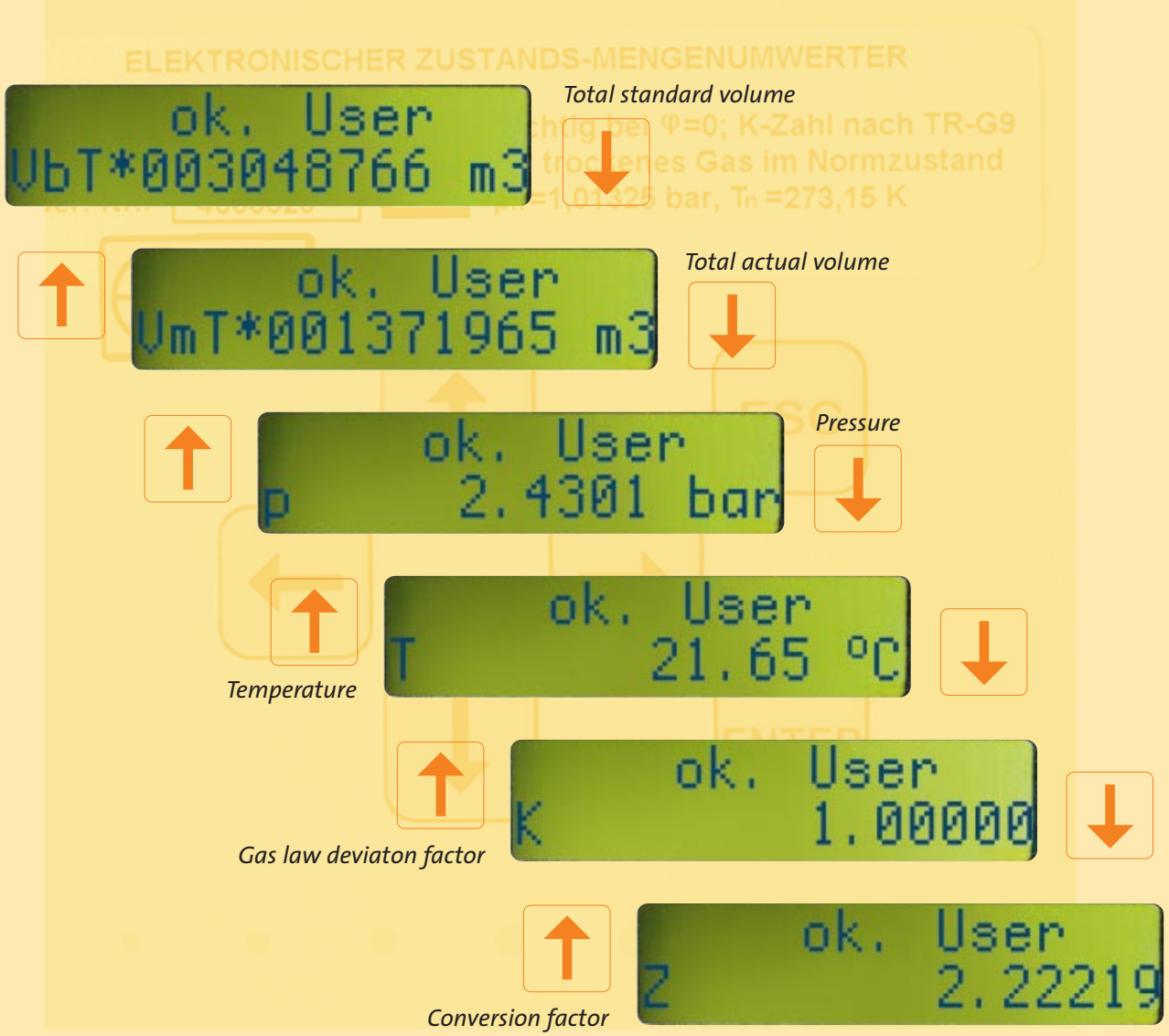
That means that the energy provider can determine on their own which values are to be displayed in addition to standard volume readings.

If it is necessary to make any other settings in the device parameters, then all displayable values can be called up and, if required, changed by displaying the entire user interface. The data is organised in a two-dimensional table. Using the arrow keys, it is easy to navigate around this table and to make the relevant settings.

We have also made improvements when it comes to interpreting any error messages. Status and error codes are now shown in plain language, which means when an initial diagnosis is to be made on site, there is also no need to have an instruction manual.

When we develop our products, we do not only look at the functionality and features of the products, we also focus on user-friendliness. This saves the user time and money. We often get suggestions directly from users on how to improve the day-to-day user-friendliness of the devices. If you also have any ideas on how your work can be made easier, get in touch with us.

RÜDIGER PFEIL, ELSTER GERMANY pfeil@elster.com



Have You Seen This?

Fun with the ELSTER-AMCO-Group

Have you seen any creative, funny or extraordinary examples of gas installations anywhere in the world? Take a snapshot! We at ELSTER-AMCO would like to publish your snapshots and you will get a gift in return.

Send your photo to:
 ELSTER Handel GmbH
 Gudrun Biedermann
 Steinern Strasse 19-21
 55252 Mainz-Kastel, Germany

Or send us a file per E-mail:
 biedermann@elster.com

We hope to hear from you soon !

Ashamed? Why face the wall?
 Spotted by Hermann Ziessnitz,
 Baku (Azerbaijan)

