

COMMERCIAL & INDUSTRIAL METERING

A new line of RPM series "C-Class" rotary meters for 2005

This new line complements the CMTC (Continuous Mechanical Temperature Compensation) series by creating the same style and designs for its non-TC standard line of rotary meters.

These new meters can also be fitted with an array of accessories (see photographs) such as Trace, Metscan & ITRON ERTs that are so commonly used on residential (AC-250) diaphragm meters throughout North America. Four different low-frequency pulse output options direct from the meter are also available.

In addition, a complete line of Mercury Instrumentation is available that can be mounted integral or direct to the side of the meter which are pulse driven plus the original "standard" instrument drive plate with mechanical drive.

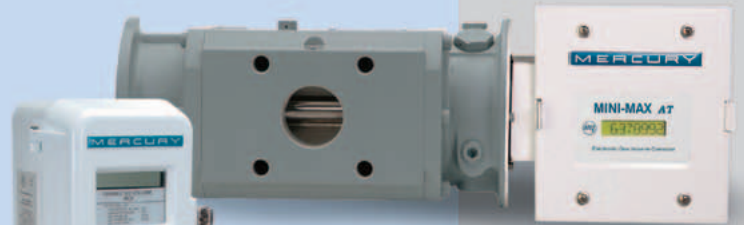
The new line of RPM meters is currently available in sizes from 9.0C to 16M with the introduction of the 23M planned for later this year.

For more information on this line of meters, visit American Meter's Web Site at www.americanmeter.com; Sales Bulletin SB5500.4 or send an E-Mail.

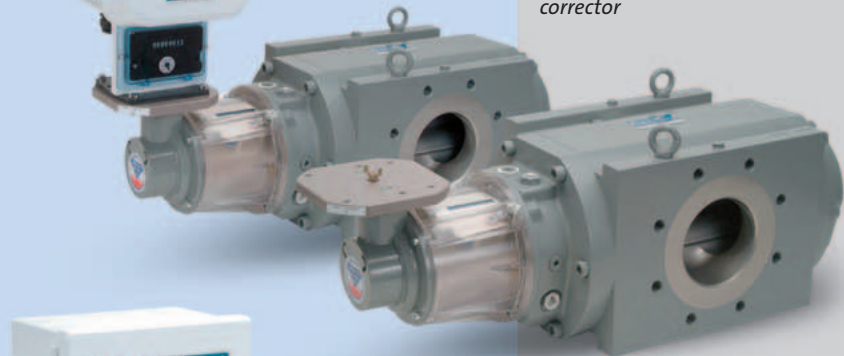
Douglas H. Bethune, AMCO USA
dbethune@americanmeter.com

3.5M Rotary Meters with standard non-compensated register (foreground) and mechanical temperature compensated with ITRON 40G ERT accessory

5.5M Rotary Meters with low frequency pulse option (foreground) and Mercury Mini-Max integral mount corrector



1.5M Rotary with Mercury Mini-Max direct mount corrector



16M Rotary Meters with mechanical instrument drive accessory for correctors

