

ROTARY METERS

Large range: G10 to G1000, low pressure and high pressure

As a result of the merger between Elster and Instromet, you can now choose from an extensive range of products all from under one roof. Each series of products has its own features and advantages. Here is a brief introduction to the individual products:

IRM-1

The IRM-1 is available in sizes G16 to G250. Depending on the market requirements, the meter can be supplied with an aluminium or a cast-steel housing. The steel housing is mainly used on the German market where high temperature resistance (HTB) is of particular importance.



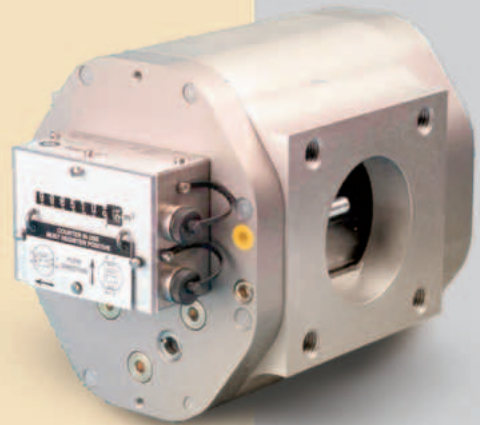
A special feature of this series is the measuring cartridge system, which helps to optimise maintenance. Under the surveillance of a calibration official or a member of staff from a state-recognised test centre, it is possible to exchange the cartridge without having to remove the device from the pipe.



On request, the IRM-1 can be equipped with a bypass function. If an impeller inside the meter happens to get blocked, the bypass function enables the gas to be re-routed around the measuring unit and the gas supply remains intact.

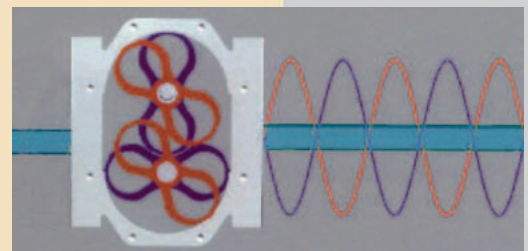
IRM-3

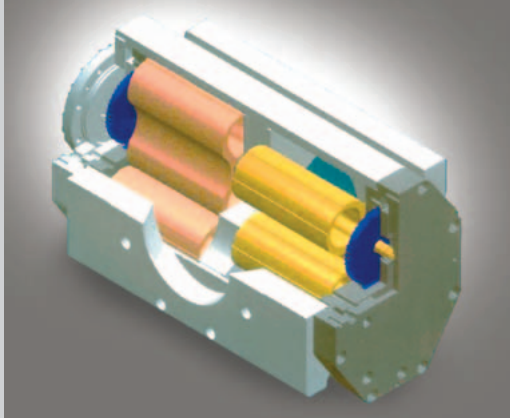
The IRM-3 is available in sizes G16 to G250. The main feature of this aluminium meter is its compact design, which is a great advantage when used in small metering and regulation systems.



DUO

In contrast to conventional meters, the DUO rotary meters have two parallel measuring chambers. The position of the impellers is arranged in such a way that any pulsations that might be generated by an individual measuring chamber are almost entirely cancelled out by the second





chamber. This method means the meter can be used where it is necessary to meet the highest of metrological requirements, e.g. in test facilities. A further advantage is the reduced noise level. For small measuring ranges the meter is available as IRM-1 DUO and for sizes G250 to G1000 it comes as IRM-3 DUO.

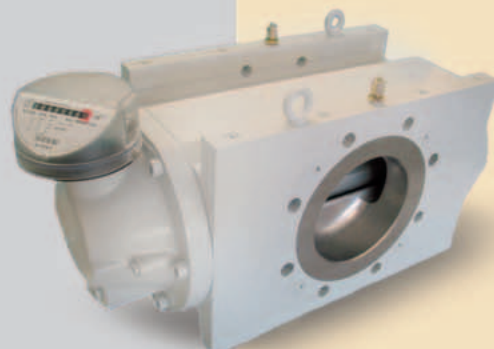
IRM-1 HD

The high-pressure version of the IRM-1 series is suitable for use with pressures up to 100 bar and comes in sizes G16 to G250. This version is always fitted with the bypass function.

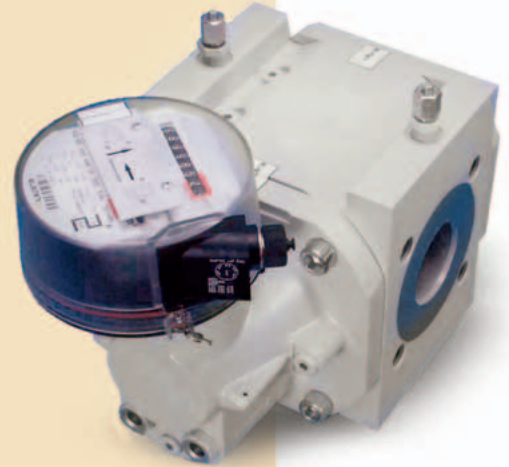


RVG

The RVG is available either with an aluminium or a cast-steel (HTB version) housing. The sizes range from G16 up to G250. The aluminium version is available up to G400.



This version is special because there are a number of different index options. You can have a single or a double index and the meter is also available with an Absolute ENCODER index.



RVG-ST

The aluminium series of meters RVG-ST covers the lower end of the flow range scale. Here you can choose from meter sizes G10, G16 and G25. The most important features are the compact design and the threaded connection.



As you can see, we can offer an extensive product portfolio covering a wide variety of applications. Of course, a wide choice makes it more difficult to choose the right device. That's where we come in. We will give you advice and help you make your choice. Just get in touch with one of our field reps or call Elster-Instromet directly.

Thomas Kettner

t.kettner@elster-instromet.com