

Flexible and easy-to-use additional functions: text message, e-mail or fax from DL210

Are you in urgent need of an assistant?

Logging the meter readings and determining the peak load values are the essential tasks that data loggers need to perform. Meanwhile various additional functions, such as sending a text message as a result of an event, have become a matter of course. Thanks to the further development of the device software for the data logger DL210, the use of this function has now become even more flexible: The new "Text Message Assistant" for the parameterisation software WinPADS guides you through the parameterisation step by step, making the application easy.

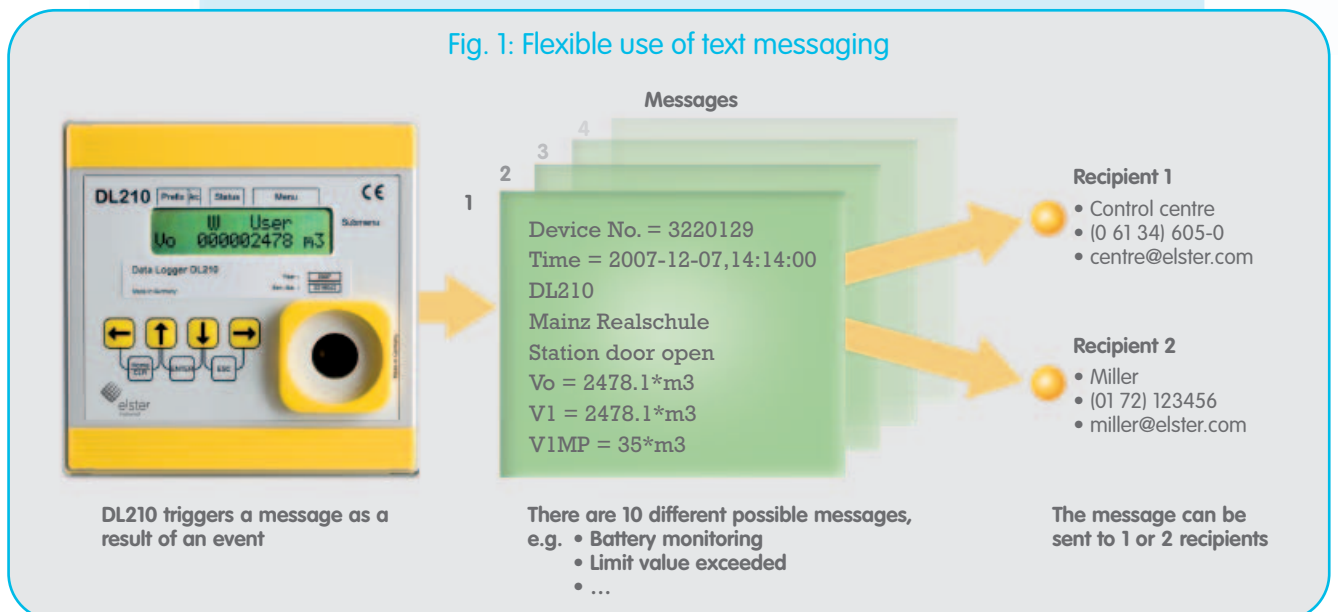


Below we will show you, with the aid of some concrete application examples, that the additional use of the text messaging function is not just another gimmick. Rather, this function provides a real advantage for the network provider or service technician and also for the customer.

Monitoring the load

The classic application is monitoring the peak load. With this function the network provider can allow the customer the opportunity to supervise the maximum load agreed in the contract. If the freely adjustable limit value is exceeded, the

Fig. 1: Flexible use of text messaging



customer immediately receives a text message with the corresponding information. He can then react quickly and, if necessary, either reduce the gas consumption or change to another energy source.

Monitoring the station

The status input of the DL210 can be used quite simply to supervise access to the gas station. For this application a mechanical door contact is required, which is connected to the data logger's status input with the aid of a two core cable. As soon as the door contact is activated, the device sends a text message with the appropriate information to the service technician. As a result, simple station monitoring is possible without the use of expensive remote technology.

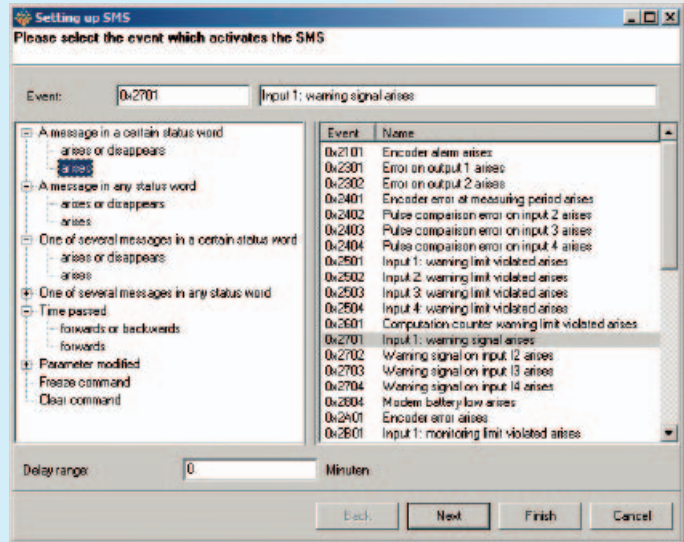


Fig. 2: Event selection

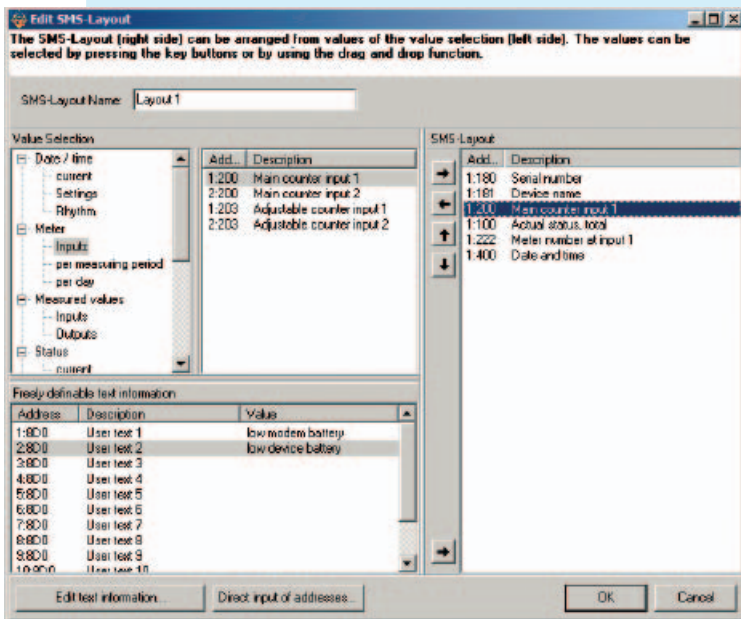


Fig. 3: Layout arrangement

Monitoring the external power supply

Almost all type DL210 devices installed are powered by an external voltage supply in order to guarantee the permanent readiness of the modem. If the external voltage supply fails, then communication is no longer possible unless an additional separate modem battery is used. In this situation, the solution from Elster comes into play and announces the failure of the external voltage supply to a service technician by text message, so that an inspection can be arranged on site.

These are just three examples of how the text messaging function of the data logger DL210 can be used. In all, up to ten different events can be defined, for which a text message is to be sent. Even the layout of these individual messages can be put together arbitrarily and can be individually assigned to the selected events. In addition, up to five recipients can be appointed, from whom up to two can be selected as text message addressees.

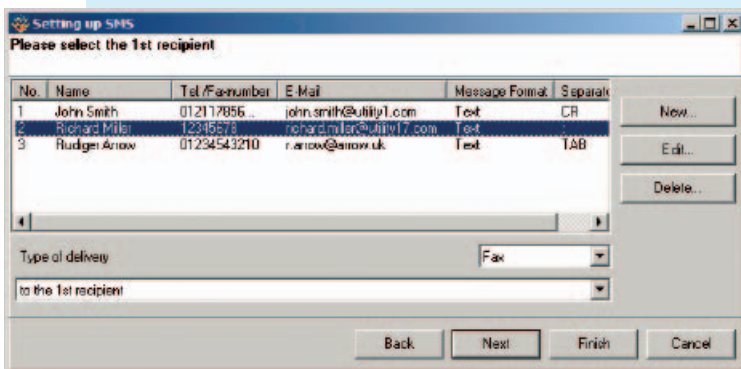


Fig. 4: Recipient selection

With the new "Text Message Assistant" for the parameterisation software WinPADS (software version 2.80), the text messaging function can easily be tailored to the individual applications. Configuration of an application is completed in three simple steps.

First of all the event is selected, for which a text message needs to be sent. For this, the events are sorted into groups so they are available for selection (Fig. 2).

In the second step the desired information for the text message is set. For this, all the values read off the data logger are available.

All the available values are grouped thematically and can be selected quickly and easily via a tree structure. Apart from the abbreviations and the device addresses, the values are written in plain text. In addition to this, a text message can be supplemented with freely programmable texts (Fig. 3).

Finally the recipient's telephone number still needs to be given. A second recipient can also be given, to be on the safe side. Incidentally, a text message need not necessarily be sent to a mobile telephone. An e-mail address, or even a fax number, can be a good alternative, in particular when the on-call service is coordinated from a central body (Fig. 4)

Thanks to the constant development of our devices, we offer a mass of additional functions from which you can benefit. As a result, apart from the actual measuring process, other tasks can also quickly be disposed of. And the "Assistant" comes at no extra cost... , but then that's how much you mean to us!

Give it a try! Download it at
http://www.elster-instrument.com/de/downloads_software.html