

Application: new functions in WinPADS software

Setting parameters and reading out data made easy

It is taken for granted that the parameterisation software for our volume correctors and data loggers is always “up to date”. In developing the software further, the focus has been placed on creating additional benefit through new functions and on ease of use. Once again, we have proved that we can provide both these aspects, with the current software version for the WinPADS parameterisation software.

Wireless connection

To date, setting the unit parameters or readout of the archives on the units has taken place using a cable connected to the PC via the USB port or the RS 232 interface. In addition to these ports, all modern laptops offer a wireless “Bluetooth” interface. This interface can now also be used for data read-out, in conjunction with the appropriate Bluetooth LIS-200 adapter (see table at the end of page 5 and Fig. 1). Previously, this option was only offered by the Read Mobile software modules for pocket PCs. The data can be transferred from a distance of approx. 10 m. This makes it easy to set the parameters and read out the data, even for devices that are difficult to access.

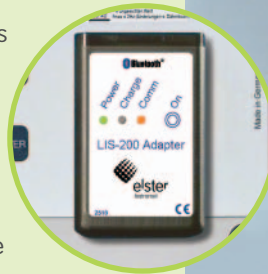


Fig. 1: Wireless connection to laptop using Bluetooth LIS-200 adapter on EK260

Contents of archives directly available

With additional software modules such as WinLOOK or WinVIEW, the contents of the archives can be presented, evaluated and exported from the data loggers and volume correctors in various ways. However, at the metering point itself, it is often enough to take a quick glance at the data and to save them in an ASCII file for further analysis – e.g. for further processing with EXCEL. Precisely this function is now available. Users can achieve the required result with just a few clicks of the mouse (Fig. 2):

- 1 Select archive screen
 - 2 Select archive required
 - 3 Enter required time period
- Complete
- 4 Save if necessary

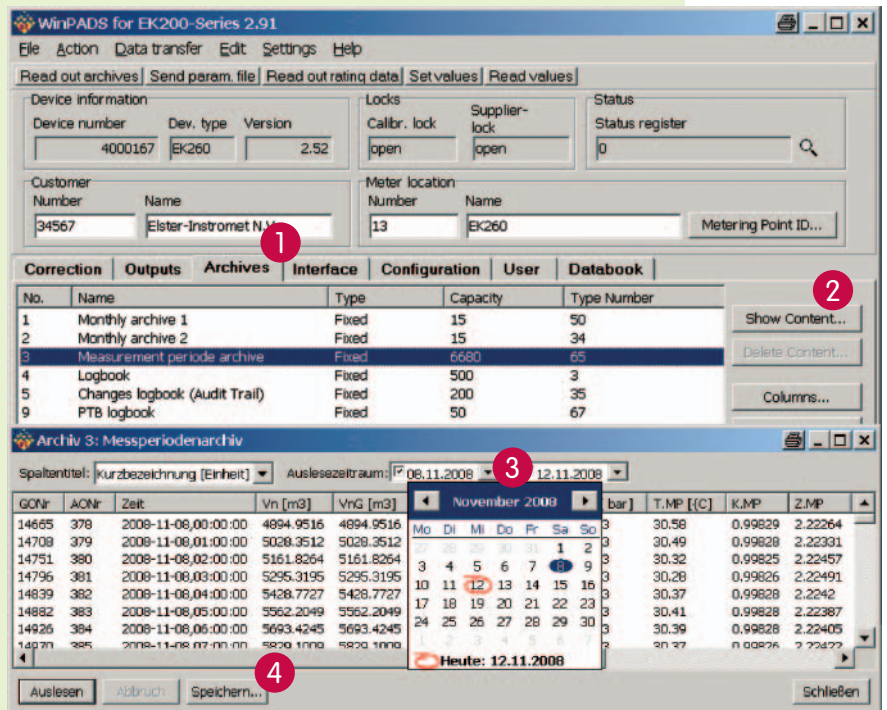


Fig. 2: Find archive contents with just a few clicks of the mouse

Selection of values with filter function

For some time now, the selection of values for all relevant functions, such as USER list, process data block, Modbus list, user-specific lists, has been supported with a tree structure. Here, all available values are sorted into groups, making it easy to select them. In order to make it easier for the user to find a value, there is now a simple and efficient filter function.

Here is an example: The disturbance quantity for the standard volume is to be displayed in the USER list. The user enters the term "disturbance" into the "Filter" field. Immediately, all the groups are hidden, except those that contain one or more values with this term (Fig. 3). Making the selection is now child's play.

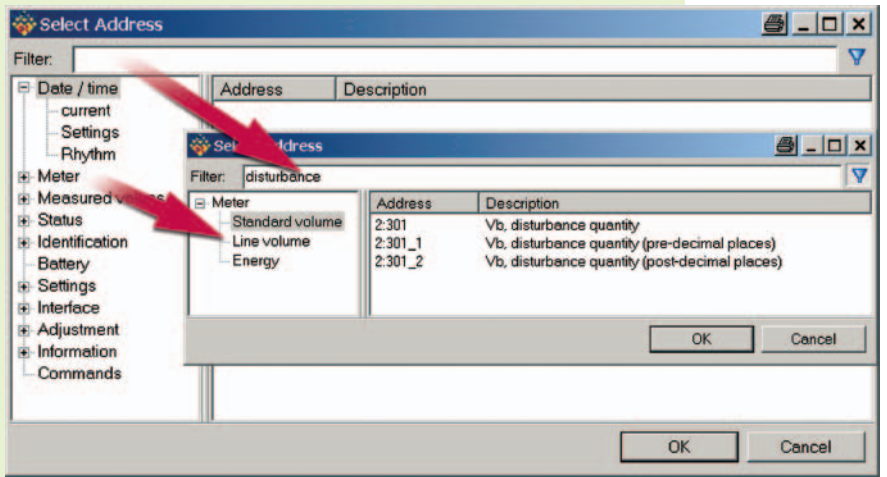


Fig. 3: Filter function – easy-to-use selection of values

Technical data for Bluetooth LIS-200 adapter

Bluetooth interface	Bluetooth 1.1/Class 2, range approx. 10 m, Serial Port Profile (SPP)
Interface to device	Infrared pursuant to IEC 62065-21, baud rates: 300 – 9600 Bd
Devices supported	TC210, EK210, EK220, Ek230, EK260, DL210, DL220, DL240
Power supply	Integrated NiMH battery with charging connection
Battery life	7 h of continuous operation
Charger	230 V AC
Dimensions	Width: 50 mm, height: 72 mm, depth: 29 mm
Lens	Diameter 32 mm
Weight	approx. 130 g
Operating temperature range	0°C – +50°C

The development of parameterisation software is an ongoing process, whereby we not only develop new functions, but also constantly improve the software's ease of use. Why not see for yourself? The current versions of the volume correctors and data loggers are available to download at: www.elster-instromet.com/de/downloads_software.html.

Rüdiger Pfeil ruediger.pfeil@elster.com