

Table of contents

1	Elster Software and Operating System Windows VISTA.....	2
2	Rights to install the software	2
3	Borland Database Engine (BDE) Settings.....	3
4	Additional settings in a Windows XP environment.....	4
4.1	Registry entry to operate the WinVIEW and WinCOMS in parallel.....	4
5	Additional settings in a Windows VISTA environment.....	5
5.1	Registry entry to operate the WinVIEW and WinCOMS in parallel.....	5
5.2	Settings for the software component WinVIEW to access the master data	6
5.3	Display the help files.....	7
5.4	Data synchronization with ReadMobile.....	8
6	Rights for Operation	8

1 Elster Software and Operating System Windows VISTA

The Elster Software is, in general, not VISTA compliant but with appropriate settings, which are described in the sections below, it runs capable.

The following software components from Elster were checked with operating system version 'Windows VISTA Business Edition' and run capable as of the indexed version:

Software components	Run capable with operating system 'Windows VISTA Business Edition' as of version
WinCOMS	V2.15
Modem server	V1.07
WinLIS	V1.54a
WinVIEW	V1.35
WinVIEW-Import	V1.05
WinTASK	V1.16
User administration	V1.09
WinLOOK	V1.16
WinPADS DL200	V2.73
WinPADS EK200	V2.73
WinPADS DS/EK	V2.20
WinPADS TC90	V1.14
ReadMobile	V1.16

2 Rights to install the software

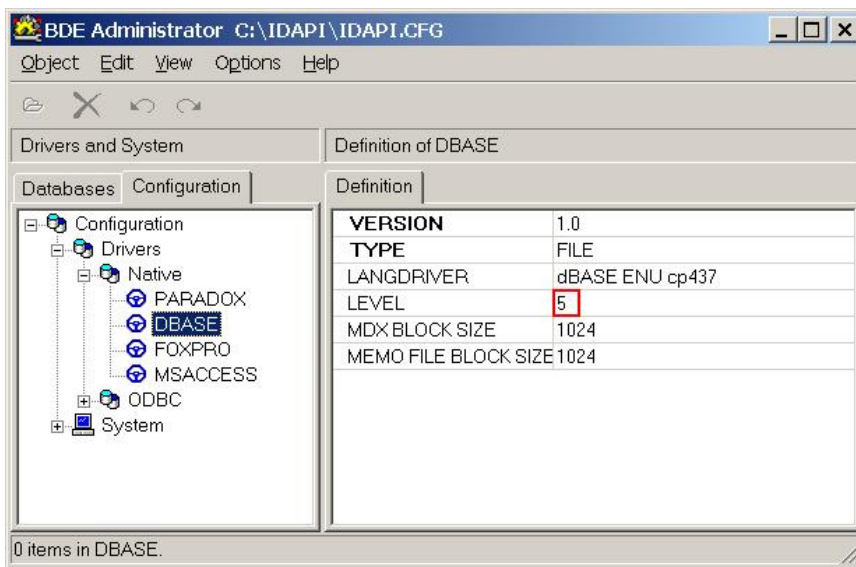
To install the Elster software administrator rights are necessary, because files will be created in the Windows folder as well as in the program folder and entries were made in the registry (dependent from the installed software component).

Beside that additional software modules like the Borland Database Engine (BDE) to operate the Elster software components WinLIS and WinCOMS have to be installed.

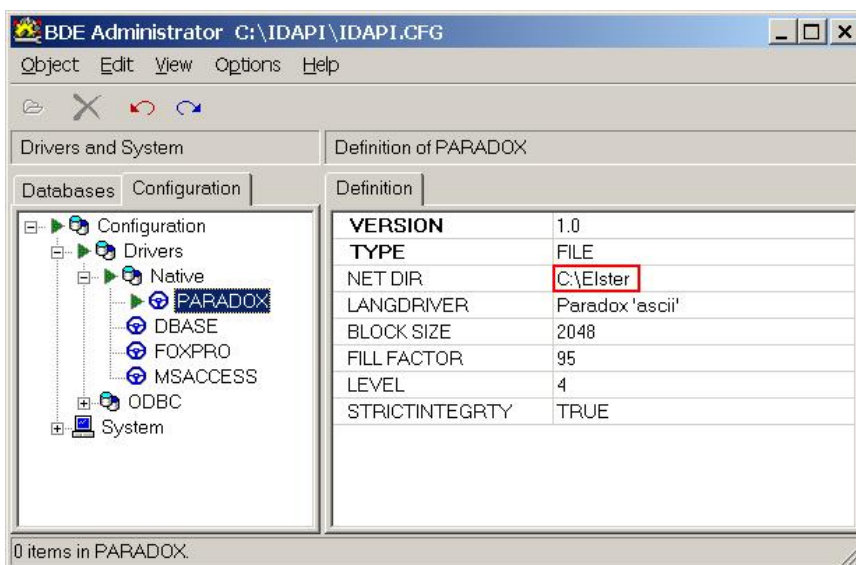
3 Borland Database Engine (BDE) Settings

After the BDE is installed to operate the Software components WinLIS and WinCOMS the following settings have to be checked with the 'BDE Administrator' in the Control Panel of the operating system:

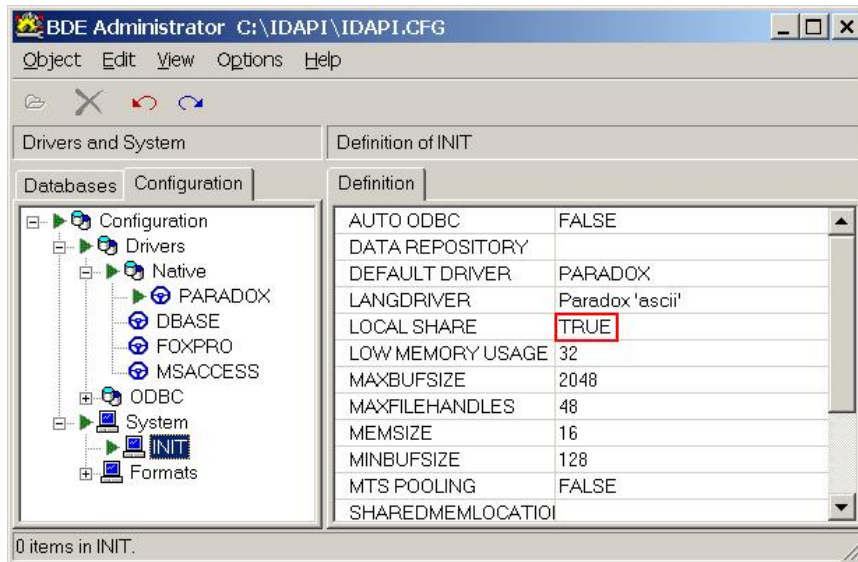
- The parameter 'LEVEL' of the DBASE driver has to be set to '5' (should be the default setting):



- The PARADOX net directory (parameter 'NET DIR') has to be set to a folder, for which a standard user has full access rights (read/write); Only temporary used files will be created in that folder:



- The parameter ,LOCAL SHARE' to control the parallel access of BDE and non-BDE applications to common files has to be set to 'TRUE ':

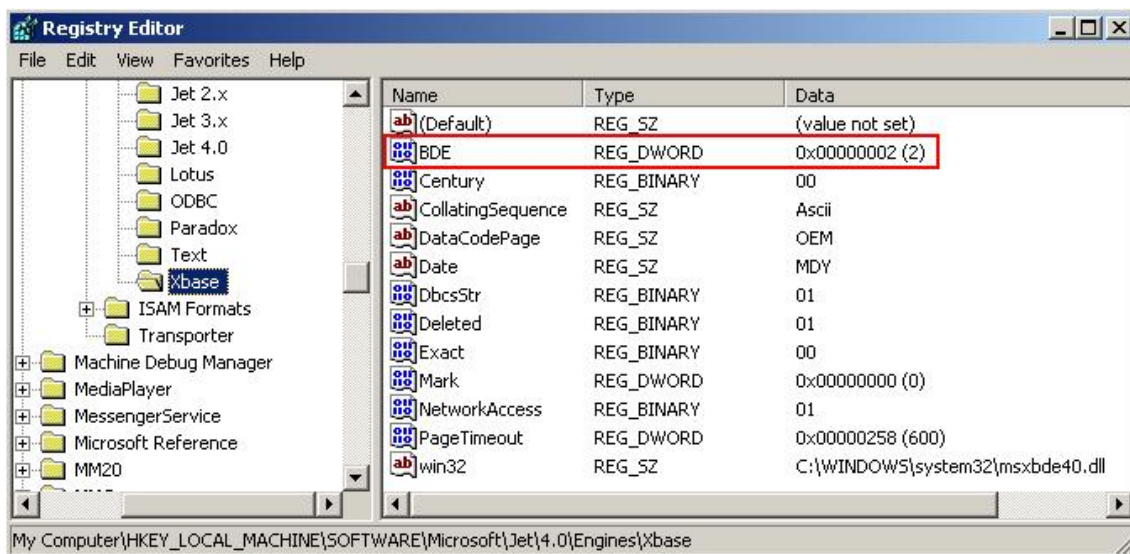


4 Additional settings in a Windows XP environment

4.1 Registry entry to operate the WinVIEW and WinCOMS in parallel

To operate the software components WinCOMS and WinVIEW in parallel in a Windows XP environment the following entry in the registry has to be created:

'HKEY_LOCAL_MACHINE \ Software \ Microsoft \ Jet \ 4.0 \ Engines \ Xbase' - DWORD value 'BDE = 2'

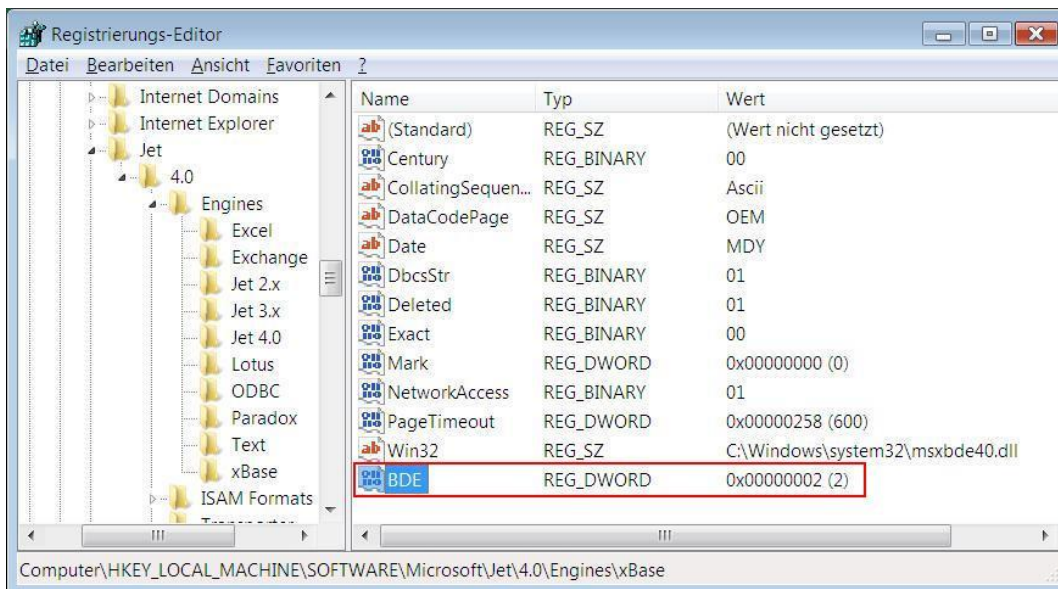


5 Additional settings in a Windows VISTA environment

5.1 Registry entry to operate the WinVIEW and WinCOMS in parallel

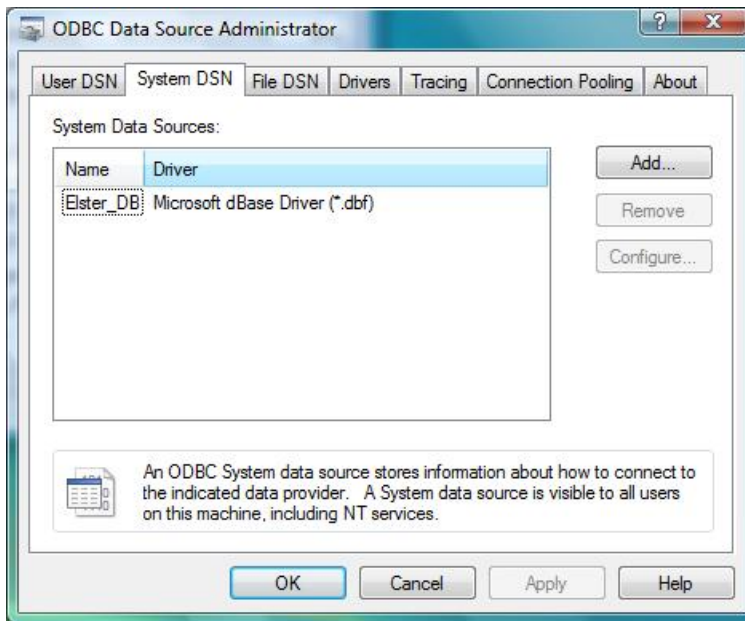
To operate the software components WinCOMS and WinVIEW in parallel in a Windows VISTA environment the following entry in the registry has to be created:

'HKEY_LOCAL_MACHINE \ Software \ Microsoft \ Jet \ 4.0 \ Engines \ Xbase' - DWORD value 'BDE = 2'



5.2 Settings for the software component WinVIEW to access the master data

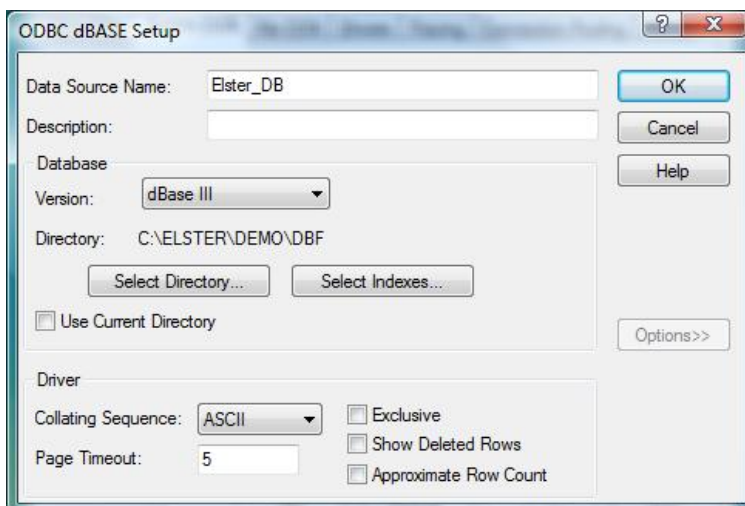
In a Windows VISTA environment the software component WinVIEW has to access to the master data via ODBC. For that an ODBC system data source name (system DSN) has to be defined via 'Start | Settings | Control Panel | Administrative Tools | Data Sources (ODBC) | System DSN'



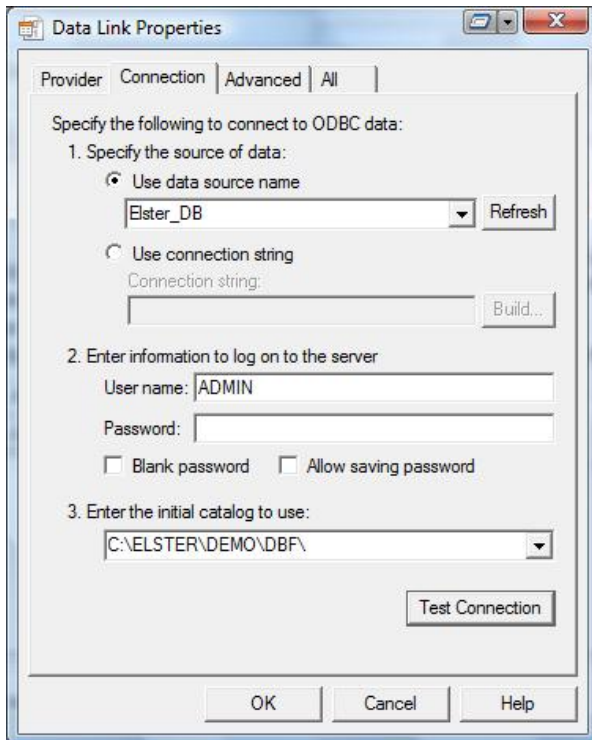
With button 'Add ...' a new data source name has to be defined.

Select driver '(Microsoft dBase Driver (*.dbf)'. After the selection the system DSN has to be configured:

- Fill in a data source name, for example "Elster_DB". This data source name will be used later on in the WinVIEW configuration.
- Set version to 'dBase III'
- The check boxes 'Use Current Directory' and 'Show Deleted Rows' have to be deactivated.
- Select the Elster master data directory (DBF directory) (Default: C:\Auswert\DBF)



With the defined system DSN the WinVIEW master data access has to be adapted for the standard user. To do that the default settings in menu 'Options | Configure the database | Connection' have to be changed to:



In 'Use data source name' choose the one which was configured above. Via button 'Test Connection' the connection to the master data base could be tested.

5.3 Display the help files

To display the help files (so called '.hlp' files) the windows help program 'WinHlp32.exe' is needed. If it is not installed it could be downloaded from the Microsoft homepage

<http://www.microsoft.com/downloads/details.aspx?FamilyID=6ebcfad9-d3f5-4365-8070-334cd175d4bb&DisplayLang=en>

Alternative:

Microsoft download center www.microsoft.com/downloads - Search 'WinHlp32.exe'

Before the download could be executed an operating system validation is required. After those please load file 'Windows6.0-KB917607-x86.msu'.



5.4 Data synchronization with ReadMobile

To communicate with mobile devices the operating system Windows VISTA uses the software ‚Windows Mobile Device Center‘ instead of the software ‚ActiveSync‘, used in a Windows 2000 or Windows XP environment.

If the software is not installed it could be downloaded from the Microsoft homepage <http://www.microsoft.com/windowsmobile/devicecenter.msp> - Selection ‚English, 32-Bit‘.

Alternative:

Microsoft download center www.microsoft.com/downloads - Search ‚drvupdate-x86.exe‘.

Before the download could be executed an operating system validation is required.

6 Rights for Operation

After the software installation is done the rights for a standard user have to be set:

- Full access rights to the INI files in the Windows folder:

Software components	INI files in the Windows folder
WinPADS DS/EK	wpdsek.INI
WinPADS TC90	WPTC90.INI
WinLIS	win.INI, WINLIS.INI
WinCOMS, WinVIEW	WINCOMS.INI
WinVIEW-Import	WV_Impo.INI

- Full access to the program folder were the Elster software is installed

Software components	Default Installation directory
WinPADS	C:\WinPADS\
WinLIS, WinCOMS	C:\AUSWERT\
others	C:\Program files\Elster\

- Full access to the folder were the Elster database is installed
- Full access to the folder were the BDE is installed; normally ‚C:\IDAPI‘
- Read access to the registry; in addition also write access to the entries:
 ‚HKEY_LOCAL_MACHINE \ SOFTWARE \ ELSTER‘
 ‚HKEY_LOCAL_MACHINE \ SOFTWARE \ BORLAND‘
 ‚HKEY_LOCAL_USER \ SOFTWARE \ ELSTER‘